

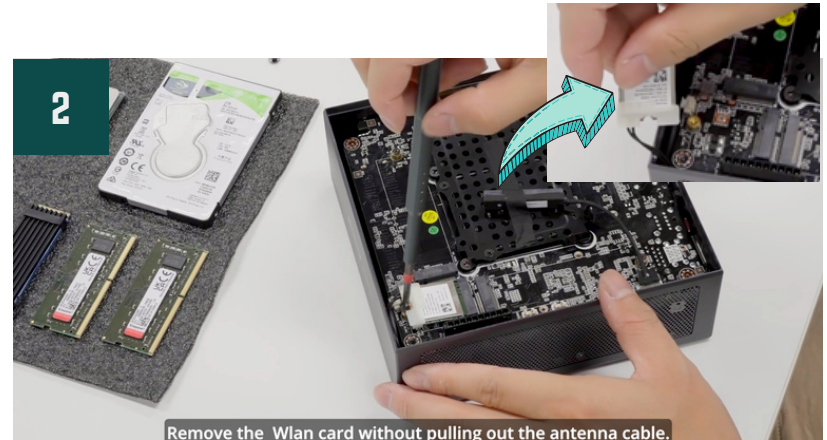


MINISFORUM B550 CPU INSTALL GUIDE

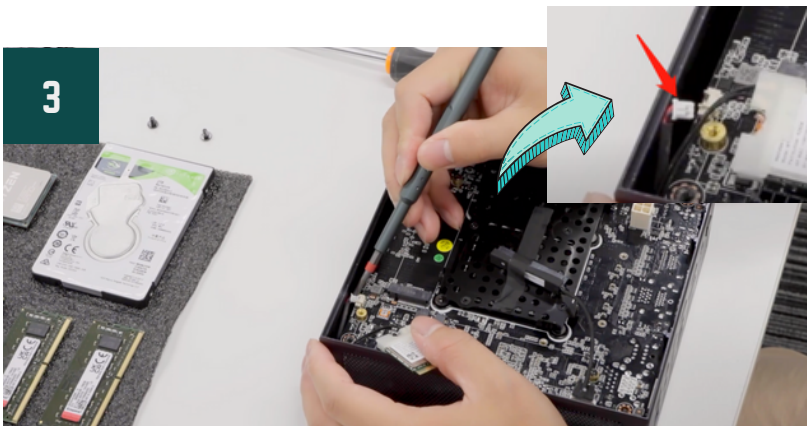
Watch video: <https://youtu.be/InIDSOBMnBE>



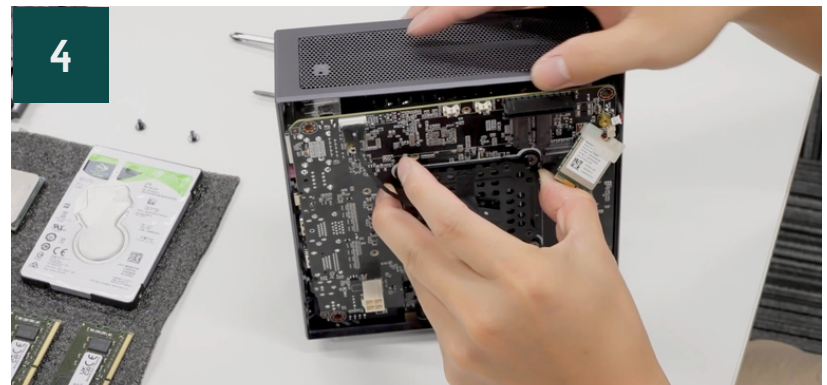
Disassemble the machine and remove the base plate



Remove the WLAN card, do not pull out the antenna cable



Unplug the LED light cable



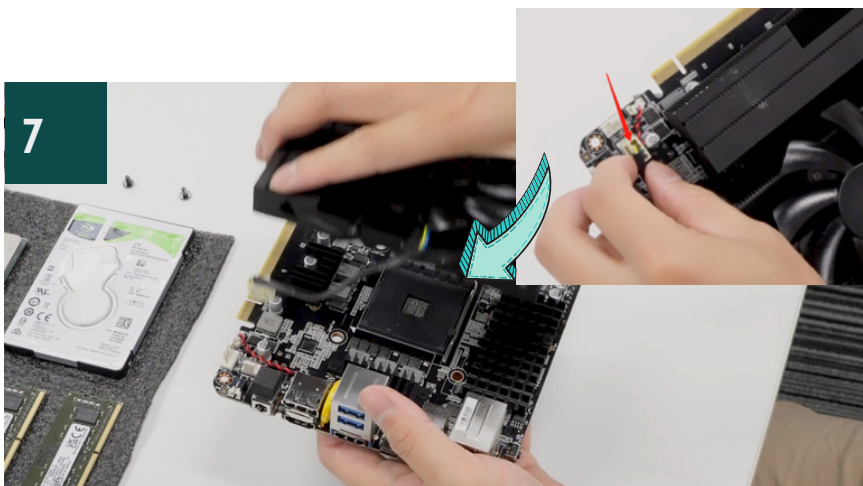
Pull out the motherboard



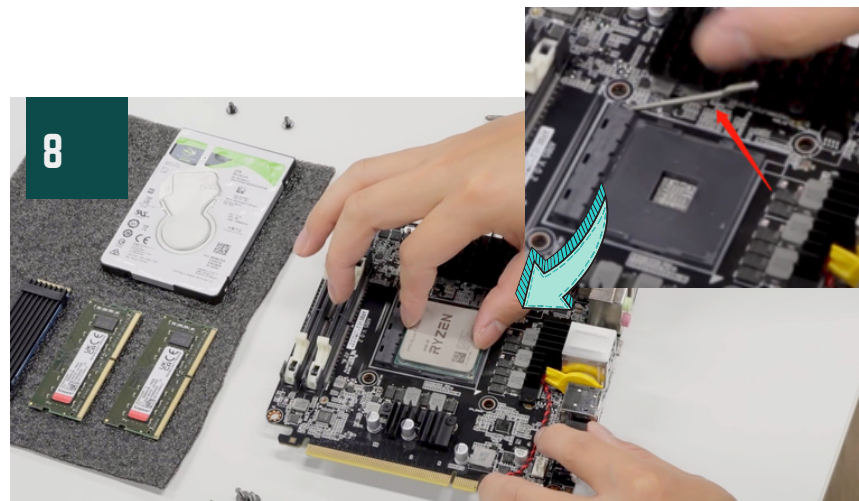
Remove the HDD bracket



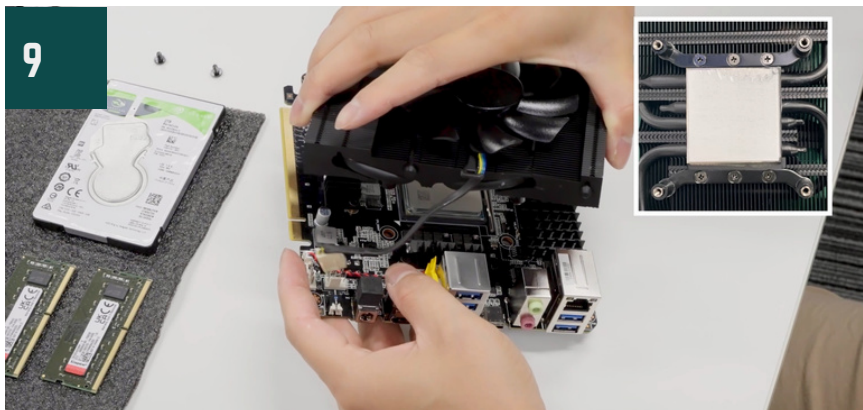
Remove the CPU cooler



Flip over to the other side and remove the fan

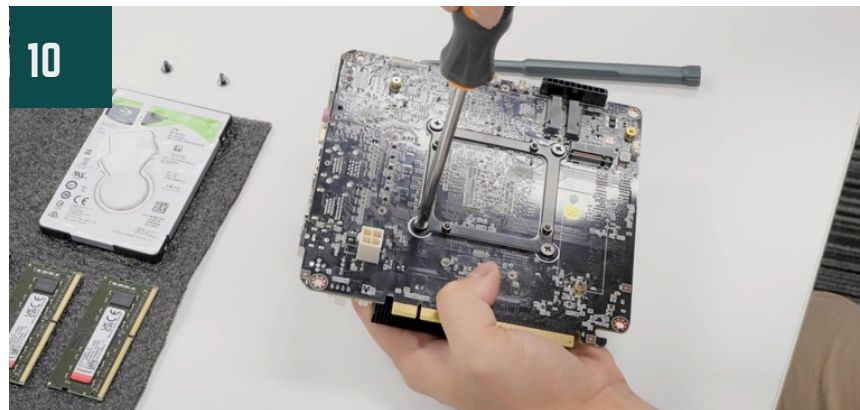


Install the CPU firmly



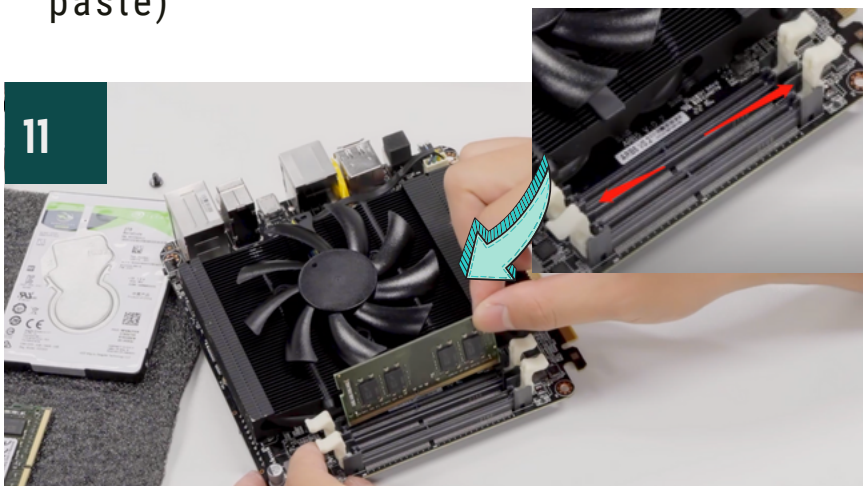
9

Connect fan(make sure there is thermal paste)



10

Reinstall the CPU cooler



11

Install RAM



12

Reinstall the board as the direction (Pcle interface side)indicated



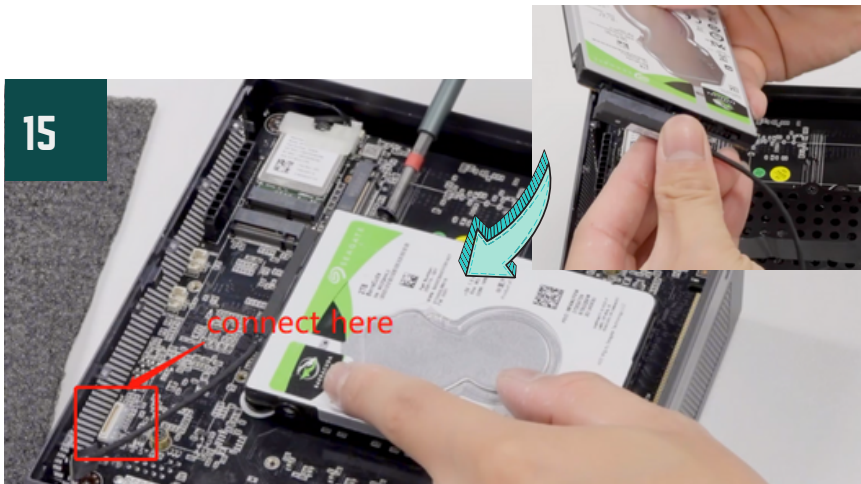
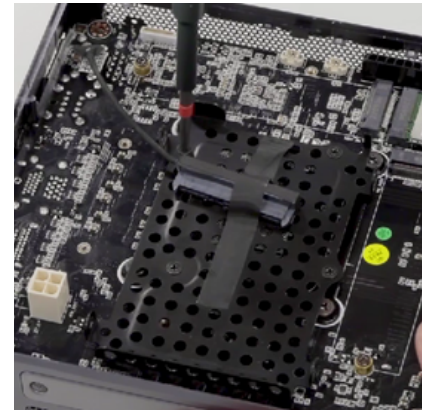
13

Connect LED lights



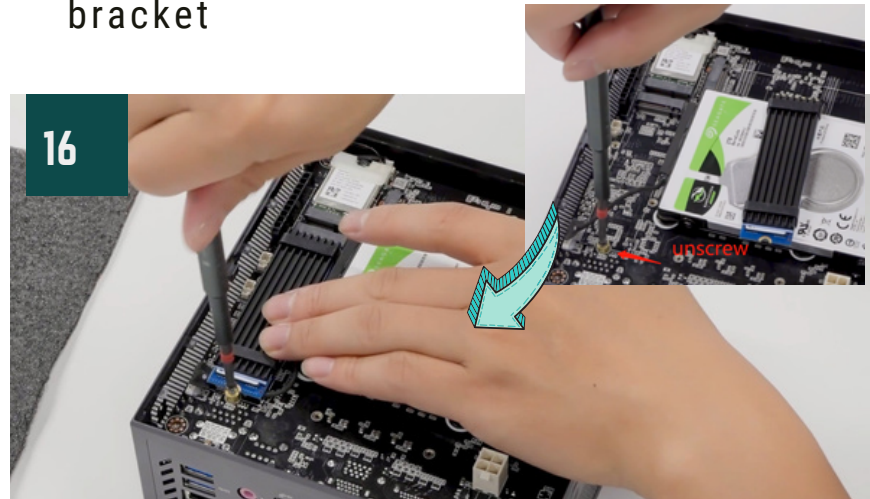
14

Reinstall the WLAN card and HDD bracket



15

Install the HDD (7mm thickness)



16

Install the SSD and then put the bottom plate back on

THANK YOU!

